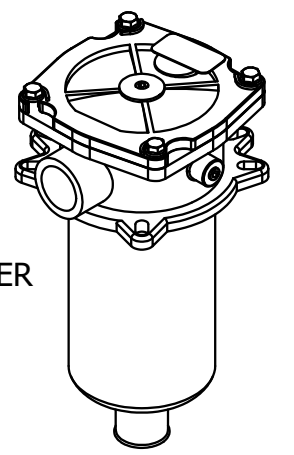


Parts List			
ITEM	QTY	PART NUMBER	DESCRIPTION
1	1	57XL-40	40 Micron FILL w/30 Mesh Stainless Strainer
2	1	AFC-507	FILTER PORT COVER 6.25 DIA. B.C.
3	2	BF-16	1" NPT VENT
4	1	N_A30100-STRF	NAM WELDMNT 48W30H16D ~222.2 lbs
5	1	T-LLG-5	SIGHT/TEMP. GAUGE, 5"

AMP PARTS INCLUDE:  
 -ASK-210 HEAVY DUTY CHASSIS MOUNTING KIT  
 -ASK-200G (4) GUSSETED MOUNTING ANGLES

NOTES:  
 -POWDER COAT BLACK  
 -APPLY RUST INHIBITOR INSIDE  
 -PLUG ALL PORTS FOR SHIPMENT

\* ON ORDER ONLY: LIT-1250-10P IN-TANK RETURN FILTER



STAMP SERIAL No. HERE

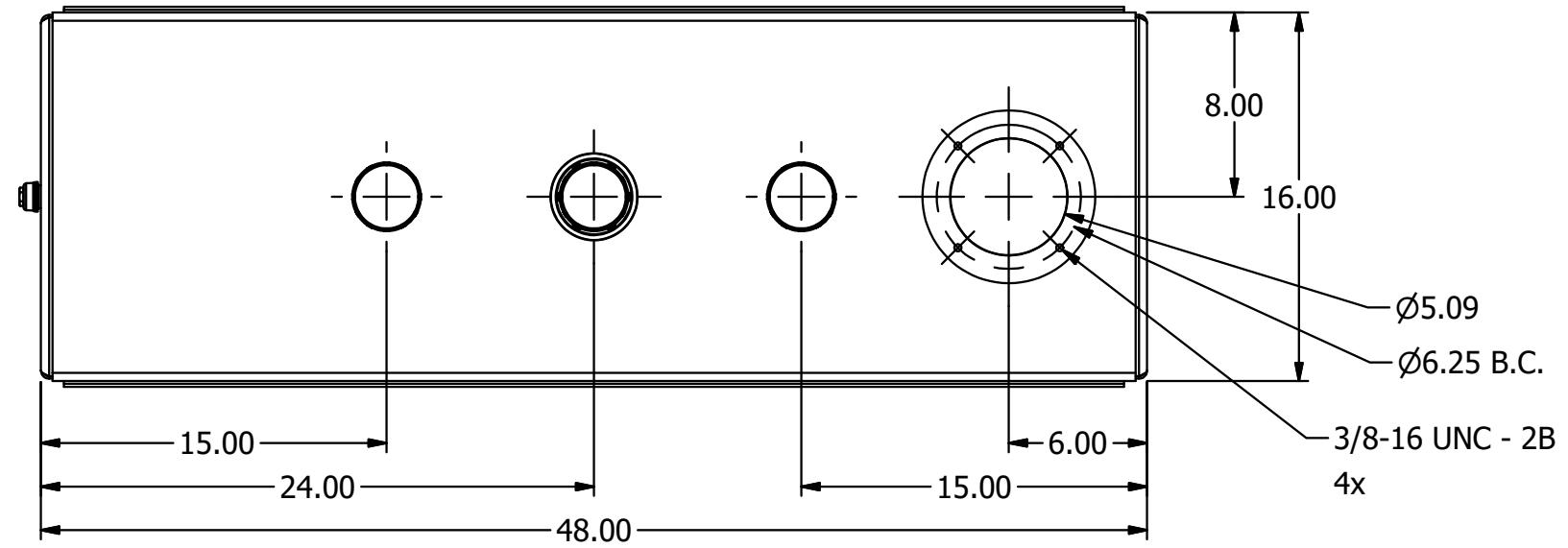
WT: ~223.97 lbs

<b>AMERICAN MOBILE POWER</b> <small>PH: (800) 634-8265 FAX: (765) 948-3403</small>	DRAWING BY: BPKNIGHT	DESIGN FOR: AMP	FILE NAME: A30100-STRF	
	COMPLETED: 6/6/2007		SHEET: 1 of 11	SHEET SIZE: B

4 3 2 1

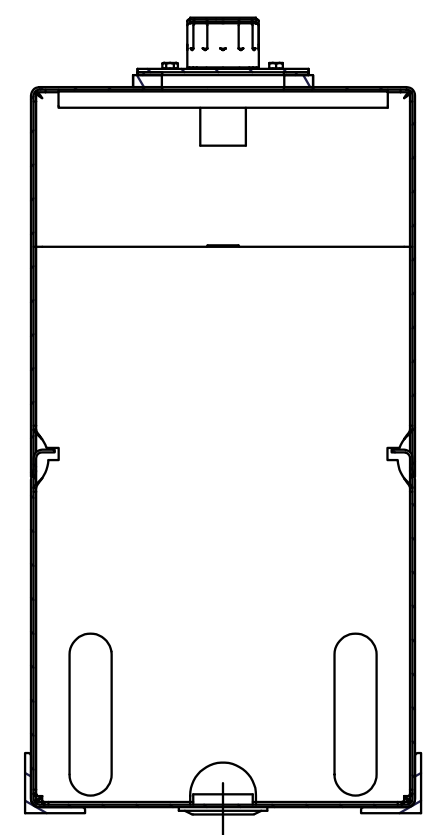
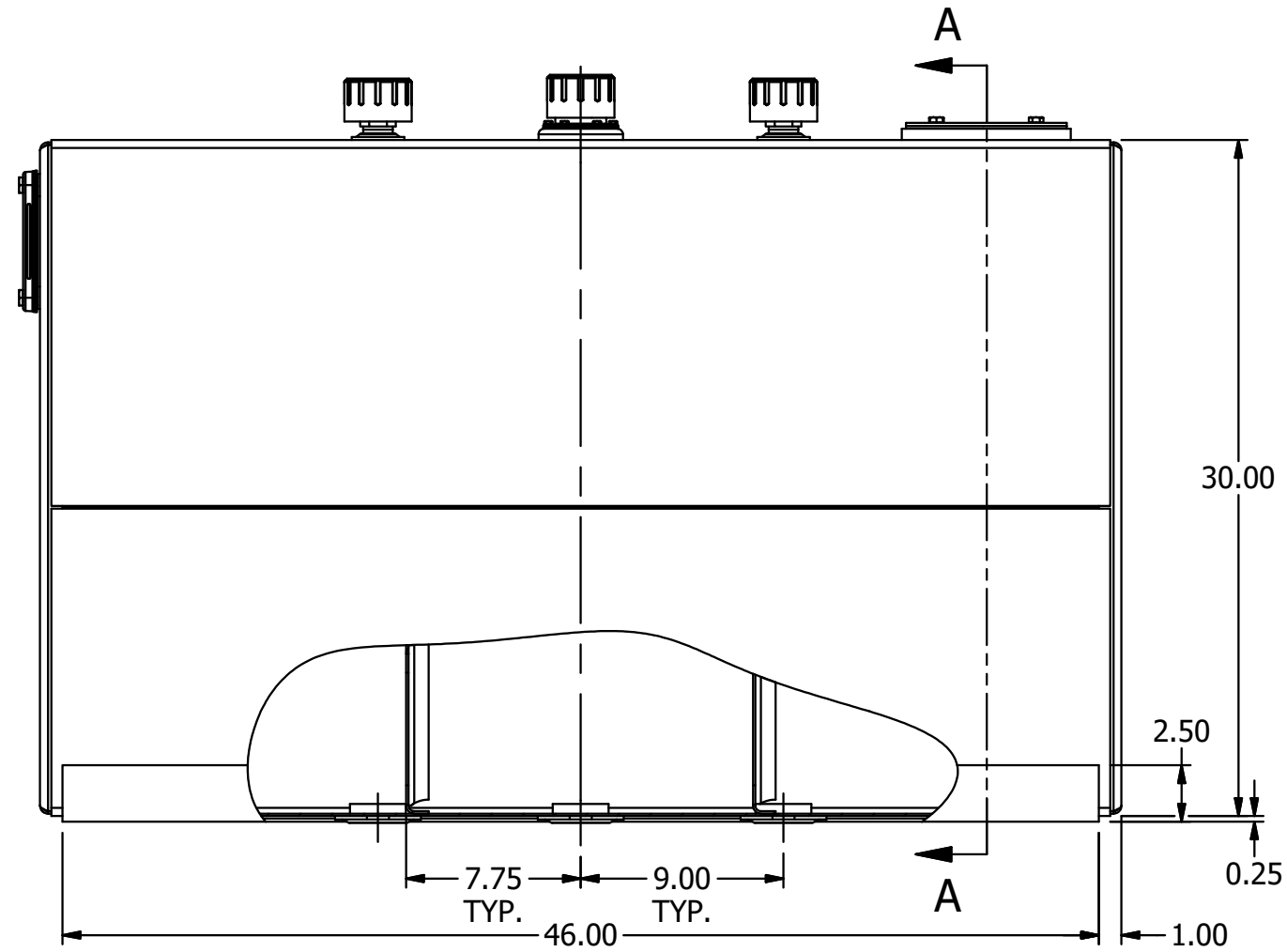
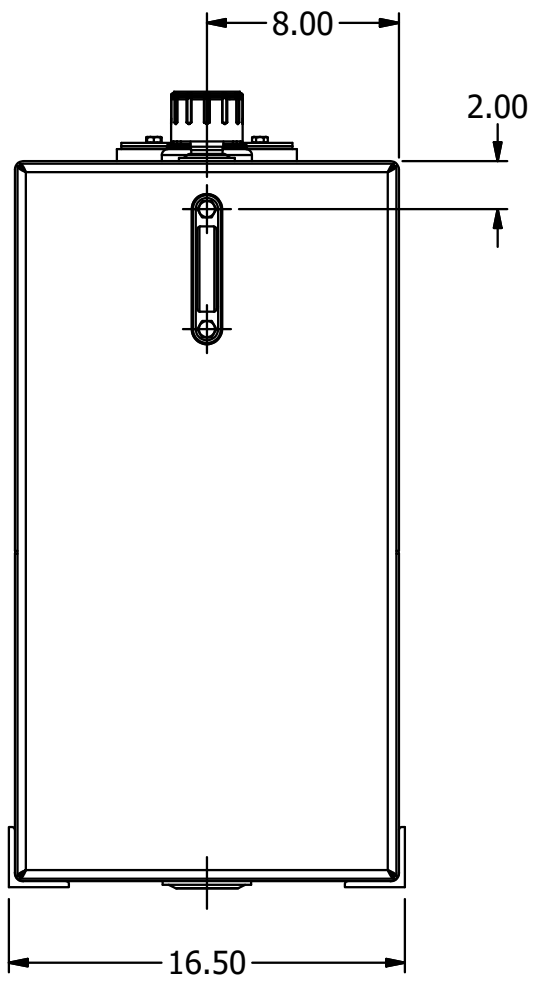
B

B



A

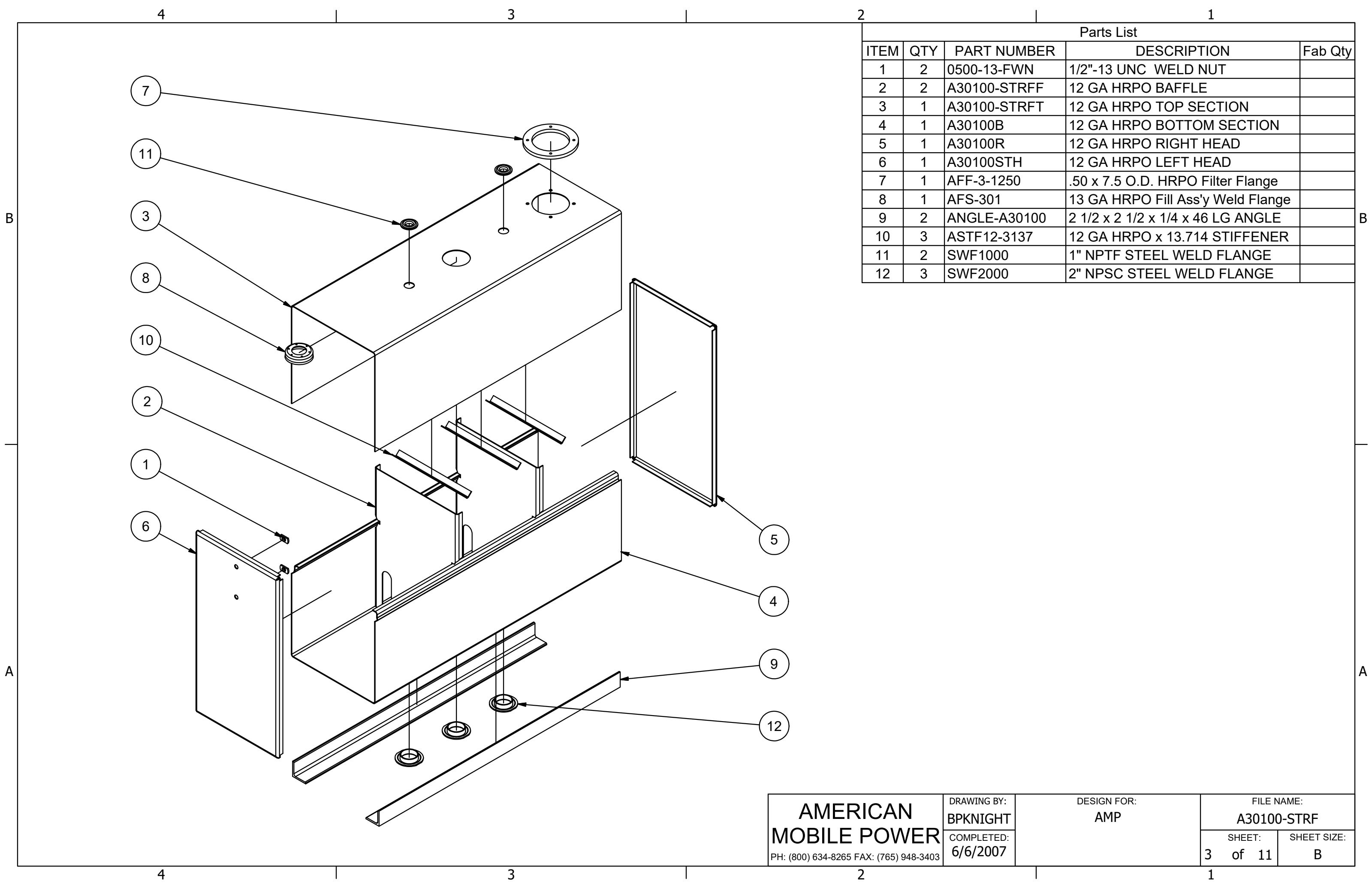
A



SECTION A-A

<b>AMERICAN MOBILE POWER</b> <small>PH: (800) 634-8265 FAX: (765) 948-3403</small>	<small>DRAWING BY:</small> <b>BPKNIGHT</b>	<small>DESIGN FOR:</small> <b>AMP</b>	<small>FILE NAME:</small> <b>A30100-STRF</b>	
	<small>COMPLETED:</small> <b>6/6/2007</b>		<small>SHEET:</small> <b>2 of 11</b>	<small>SHEET SIZE:</small> <b>B</b>

4 3 2 1



Parts List				
ITEM	QTY	PART NUMBER	DESCRIPTION	Fab Qty
1	2	0500-13-FWN	1/2"-13 UNC WELD NUT	
2	2	A30100-STRFF	12 GA HRPO BAFFLE	
3	1	A30100-STRFT	12 GA HRPO TOP SECTION	
4	1	A30100B	12 GA HRPO BOTTOM SECTION	
5	1	A30100R	12 GA HRPO RIGHT HEAD	
6	1	A30100STH	12 GA HRPO LEFT HEAD	
7	1	AFF-3-1250	.50 x 7.5 O.D. HRPO Filter Flange	
8	1	AFS-301	13 GA HRPO Fill Ass'y Weld Flange	
9	2	ANGLE-A30100	2 1/2 x 2 1/2 x 1/4 x 46 LG ANGLE	
10	3	ASTF12-3137	12 GA HRPO x 13.714 STIFFENER	
11	2	SWF1000	1" NPTF STEEL WELD FLANGE	
12	3	SWF2000	2" NPSC STEEL WELD FLANGE	

<b>AMERICAN MOBILE POWER</b> <small>PH: (800) 634-8265 FAX: (765) 948-3403</small>	DRAWING BY: <b>BPKNIGHT</b>	DESIGN FOR: <b>AMP</b>	FILE NAME: <b>A30100-STRF</b>	
	COMPLETED: <b>6/6/2007</b>		SHEET: <b>3 of 11</b>	SHEET SIZE: <b>B</b>