

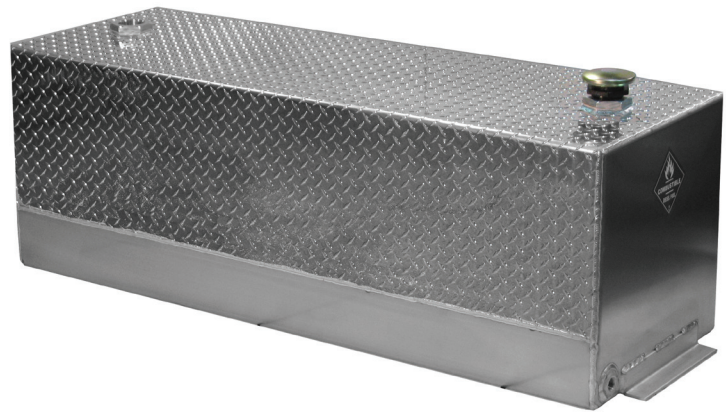
# American Transfer Tank System

## Model ATT41020

Aluminum Deck Mount - 102 Gallon

Tank Size: 59" long x 20" deep x 20" high

Shipping Weight: 88#



Total aluminum construction; top, front and back sides built of Bright Diamond Plate, balance mill finish; fully baffled; two 2" machined hexfixing NPT ports in top ends of tank to accommodate transfer pump and/or vented cap, ports are internally reinforced. 2" NPT lockable vented cap provided; two 12" long 2" x 2" angles welded to ends of tank for secure deck mounting; 3/4" NPT drain port with plug located at bottom edge of left head. Ships by truck freight.

**CHANGES MAY BE MADE TO PRODUCT WITHOUT NOTICE.**  
**TO SEE OUR FULL LINE OF DRAWINGS GO TO [WWW.AMERICANMOBILEPOWER.COM](http://WWW.AMERICANMOBILEPOWER.COM)**

Order No.	Weight	Description	Page #
<b>APP-210-M</b>	<b>1#</b>	<b>Magnetic Port Plug - 3/4" NPT</b>	<b>54</b>
<b>906001-4</b>	<b>1#</b>	<b>2" NPT Vented Cap</b>	<b>54</b>

**ALL TANKS FACTORY TESTED**

It is the users responsibility to comply with local, state, and federal requirements. Tanks are intended for use with non-hazardous fluids and fluids with a flash point greater than 100 deg. F.

**WARNING!** Transfer tanks must not be connected to a vehicle fuel system as an auxiliary fuel tank.