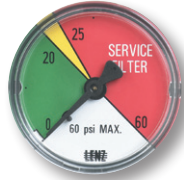




2" Diameter Filter Indicating Gauges



MC-12
Return Line Indicating Gauge
for **15 P.S.I.** Filter Applications
2" Multi color
0-12 P.S.I. Green
12-15 P.S.I. Yellow
15-60 P.S.I. Red (Service Filter)
(To be used with "T" Indicator Port Location)



MC-20
Return Line Indicating Gauge
for **25 P.S.I.** Filter Applications
2" Multi color
0-20 P.S.I. Green
21-24 P.S.I. Yellow
25-60 P.S.I. Red (Service Filter)
(To be used with "T" Indicator Port Location)



CP-2
Compound Indicating Gauge
(Suction or Return Line)
10" to 30" Vacuum is a Red Danger Area.
0-60 PSI
A Red "Change Filter" Sticker for the
Pressure side is included with each gauge
for application after the pressure factor
is determined.
(To be used with "T" or "S" Indicator Port Location)



GLY-MC-20
Glycerin Filled
Return Line Indicating Gauge
for **25 P.S.I.** Filter Applications
2" Multi color
0-20 P.S.I. Green
21-24 P.S.I. Yellow
25-60 P.S.I. Red (Service Filter)
(To be used with "T" Indicator Port Location)



135080
Suction Line Indicating Gauge for
5 P.S.I. vacuum filter application
2" Multi color
0-9" HG Green
9-11" HG Yellow
11-30" HG Red (Service Filter)
(To be used with "S" Indicator Port Location)



VAC-3-20
Suction Line Indicating Gauge
for **3 P.S.I.** vacuum filter applications
2" Multi color
0-3" HG Green
4-6" HG Yellow
6-30" HG Red (Service Filter)
(To be used with "S" Indicator Port Location)



Differential Indicator DP-75

Simple differential sliding
indicator which changes from
green to red at 7 P.S.I.D.
0 - 7 P.S.I.D. Green Clean
7 - 10 P.S.I.D. Red Service Filter
CP Series (500, 750, 1010, 1280,
1580)