

4

3

2

1

Parts List

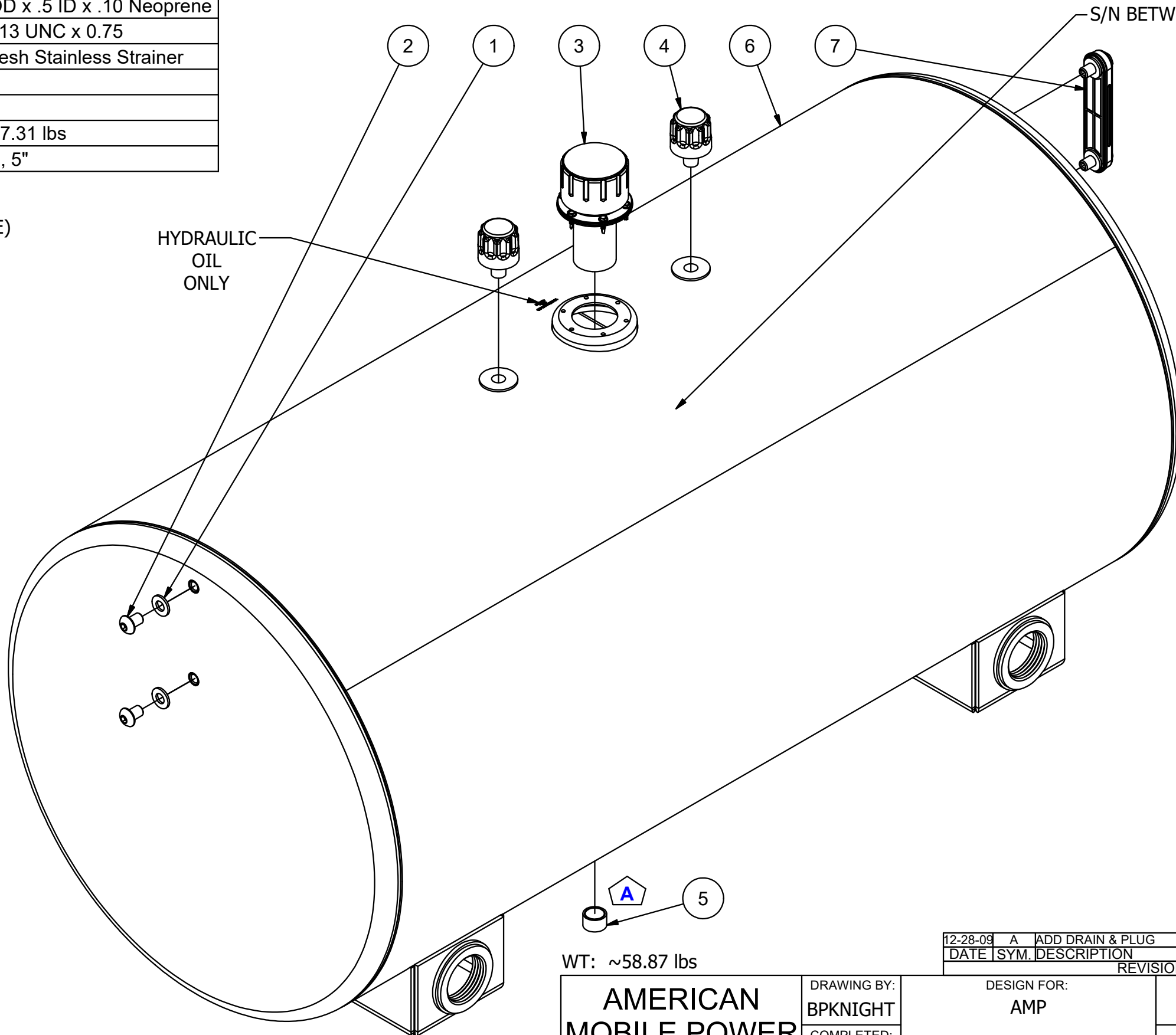
ITEM	QTY	PART NUMBER	DESCRIPTION
1	2	0500BBS	Black Buffer Seal 1.0 OD x .5 ID x .10 Neoprene
2	2	24107	Button Head, Hex, 1/2-13 UNC x 0.75
3	1	57XL-40	40 Micron FILL w/30 Mesh Stainless Strainer
4	2	ABA-138	3/8" NPT VENT
5	1	APP0750-M	3/4" NPT MAG PLUG
6	1	N_A45100-2S90-ST	NAM WELDMENT ~57.31 lbs
7	1	T-LLG-5	SIGHT/TEMP. GAUGE, 5"

B AMP PARTS INCLUDE:  
 (2) AMK-624-C MOUNTING KIT (STD) OR -S (UPGRADE)

NOTE:  
 -PLUG ALL PORTS FOR SHIPMENT

HYDRAULIC  
 OIL  
 ONLY

S/N BETWEEN FILL & SEAM



WT: ~58.87 lbs

DATE	SYM.	DESCRIPTION	BY
12-28-09	A	ADD DRAIN & PLUG	BPK

<b>AMERICAN          MOBILE POWER</b> PH: (800) 634-8265 FAX: (765) 948-3403	DRAWING BY: <b>BPKNIGHT</b>	DESIGN FOR: <b>AMP</b>	FILE NAME: <b>A45100-2S90-ST</b>	
	COMPLETED: <b>9/9/2009</b>		SHEET: <b>1 of 6</b>	SHEET SIZE: <b>B</b>

4

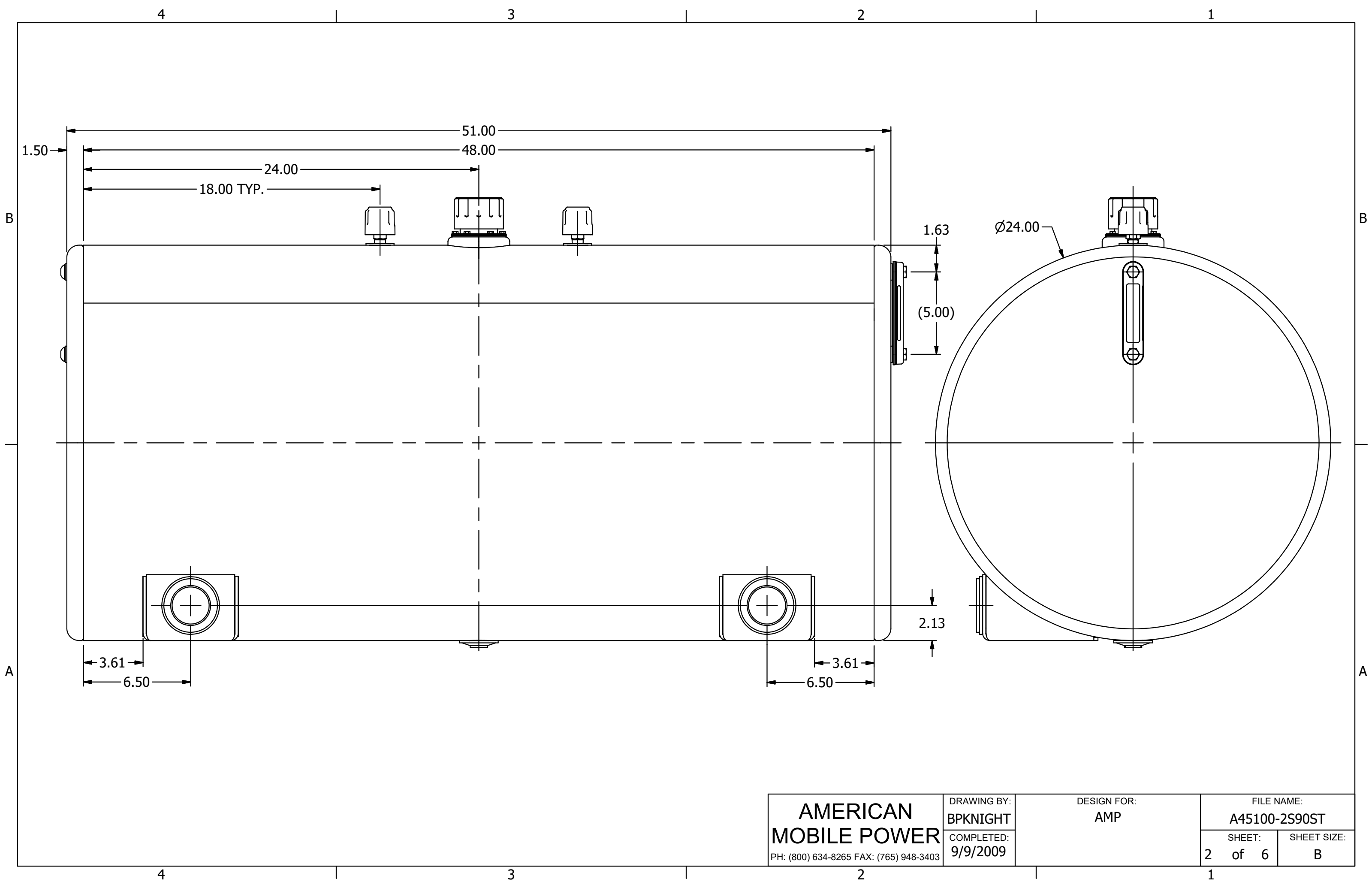
3

2

1

A

A



**AMERICAN  
MOBILE POWER**

PH: (800) 634-8265 FAX: (765) 948-3403

DRAWING BY:  
BPKNIGHT

COMPLETED:  
9/9/2009

DESIGN FOR:  
AMP

FILE NAME:  
A45100-2S90ST

SHEET:  
2 of 6

SHEET SIZE:  
B

4

3

2

1

Parts List

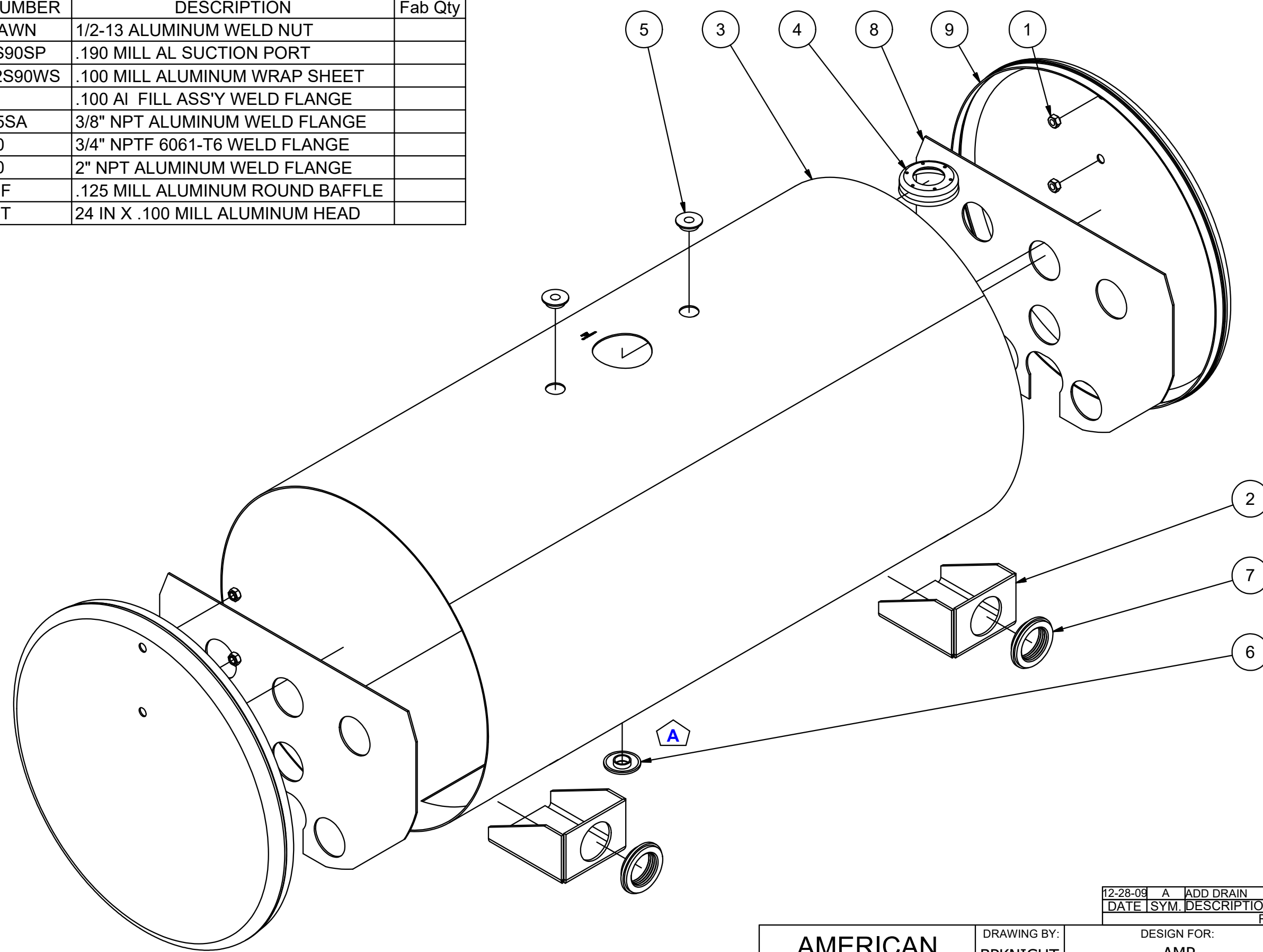
ITEM	QTY	PART NUMBER	DESCRIPTION	Fab Qty
1	4	0500-13-AWN	1/2-13 ALUMINUM WELD NUT	
2	2	A4500-2S90SP	.190 MILL AL SUCTION PORT	
3	1	A45100-2S90WS	.100 MILL ALUMINUM WRAP SHEET	
4	1	AFA-401	.100 AI FILL ASS'Y WELD FLANGE	
5	2	AWF0375SA	3/8" NPT ALUMINUM WELD FLANGE	
6	1	AWF0750	3/4" NPTF 6061-T6 WELD FLANGE	
7	2	AWF2000	2" NPT ALUMINUM WELD FLANGE	
8	2	SA0000BF	.125 MILL ALUMINUM ROUND BAFFLE	
9	2	SA0000ST	24 IN X .100 MILL ALUMINUM HEAD	

B

B

A

A



DATE	SYM.	DESCRIPTION	BY
12-28-09	A	ADD DRAIN	BPK

REVISIONS

<b>AMERICAN MOBILE POWER</b> PH: (800) 634-8265 FAX: (765) 948-3403	DRAWING BY: <b>BPKNIGHT</b>	DESIGN FOR: <b>AMP</b>	FILE NAME: <b>A45100-2S90ST</b>	
	COMPLETED: <b>9/9/2009</b>		SHEET: <b>3 of 6</b>	SHEET SIZE: <b>B</b>

4

3

2

1